

P.O.Box 130571 Tel. +49 40 33441944 www.lohrmann.com  
20105 Hamburg/Germany Fax +49 40 33441945 info@lohrmann.com

<b>For Sale:</b>	<b>Pre-owned 58,7 MW gas turbine generator with HRSG</b>
<b>Ref.-No:</b>	<b>GT-367</b>

**Brief plant history:**

The plant was commissioned in 1993 and shut down after approx. 30300 EOH (Equivalent Operating Hours) in October 2009. It is available for immediate sale and relocation.

**Description of major plant components:**

**Gas Turbine**

Type	Siemens V64.3
Fuels	natural gas, light fuel oil
Firing system	dry low NOx firing for natural gas
<b>Performance characteristics</b>	(base load, natural gas firing, ISO conditions: +15 C, 1013 mbar):
Design output	58,7 MW
Design heat rate	10 458 kJ/kWh
Design exhaust flow, temp.	185 kg/s, 540 C

**Generator**

Manufacturer	Siemens AG
Type	TLRI 86/29 (air-to-water cooled generator)
Design data	82,35 MVA; 10,5 kV; 50 Hz
Type of starter	AEG starting converter

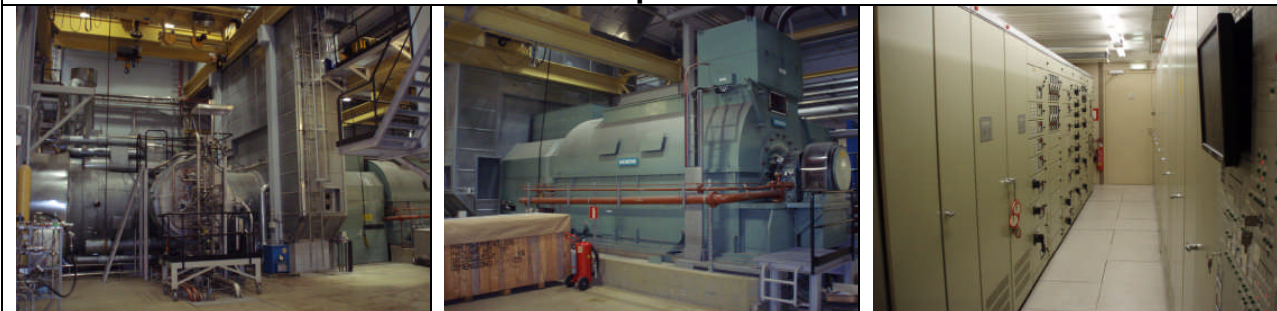
**Auxiliaries**

Complete auxiliary systems for the gas turbine generator set

**HRSG boiler**

Manufacturer	Tampella Power Oy
Type	drum boiler, forced circulation
Supplementary firing	0 - 10 MW
Steam data	24 kg/s, 523 C, 25 ... 44 bar
District heating	output / output to
Condensate heating	33 / 28 MW

**Price: on request**



**Further information on request**

**Important Disclaimer**

Although the statements and technical information contained herein are believed to be materially accurate as of the date hereof, no representation or warranty is given as to the accuracy of any of the information provided. This document contains confidential information intended only for the use of the addressee. If you are not the intended recipient of this information then you are hereby notified that any use, dissemination, distribution or reproduction of this message is prohibited.